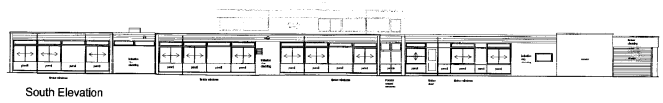


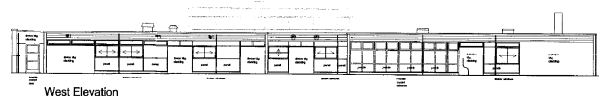
This drawing should not be scaled.  
 All dimensions must be checked on site and contractor to  
 report any omissions or errors to the contract administrator

NOTES

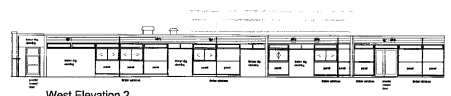
11/12/2012



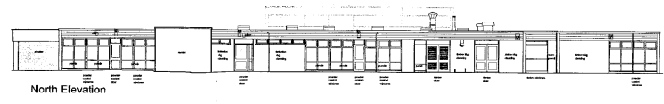
South Elevation



West Elevation



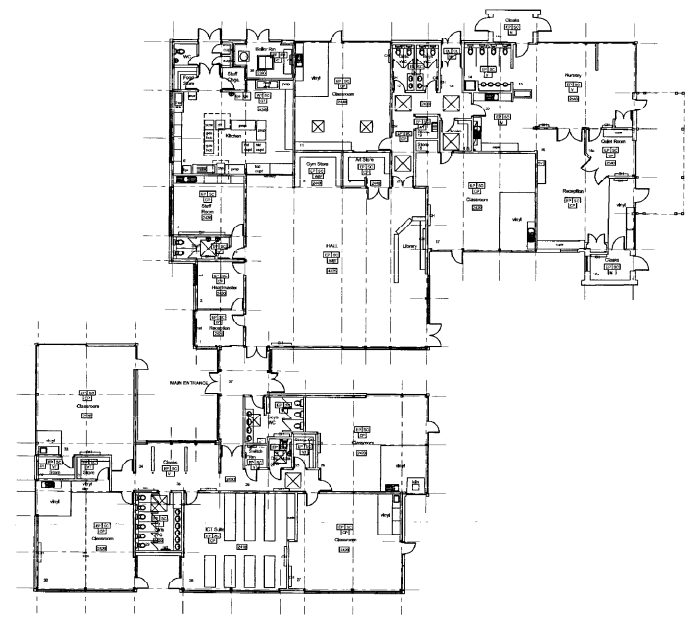
West Elevation 2



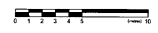
North Elevation



East Elevation



EXISTING GROUND FLOOR PLAN



STOCKTON BOROUGH COUNCIL  
 PLANNING  
 - 7 DEC 2012  
 DATE RECEIVED

B Scale amended from 1:150 to 1:200 30.11.12  
 A Issued for Planning Application 30.11.12

Rev	Description	Rev	Date

Drawing Status: PRELIMINARY  APPROVAL   
 INFORMATION  TENDER  CONSTRUCTION



Development & Neighbourhood Services  
 Head of Technical Services Richard McCook B.Eng., C.Eng., M.I.C.E.  
 P.O. Box 226, Kingsley House, West Street, Sedgeham, 1522 2PL  
 Telephone (01642) 393939, E-mail: technicalservices@stockton.gov.uk

Project  
 Junction Farm Primary School  
 Extensions & Internal Alterations

Content  
 EXISTING FLOOR PLAN & ELEVATIONS

Date	Drawn	Checked	Scale	Rev
Nov. 2012	JCS	mds	1:200	B